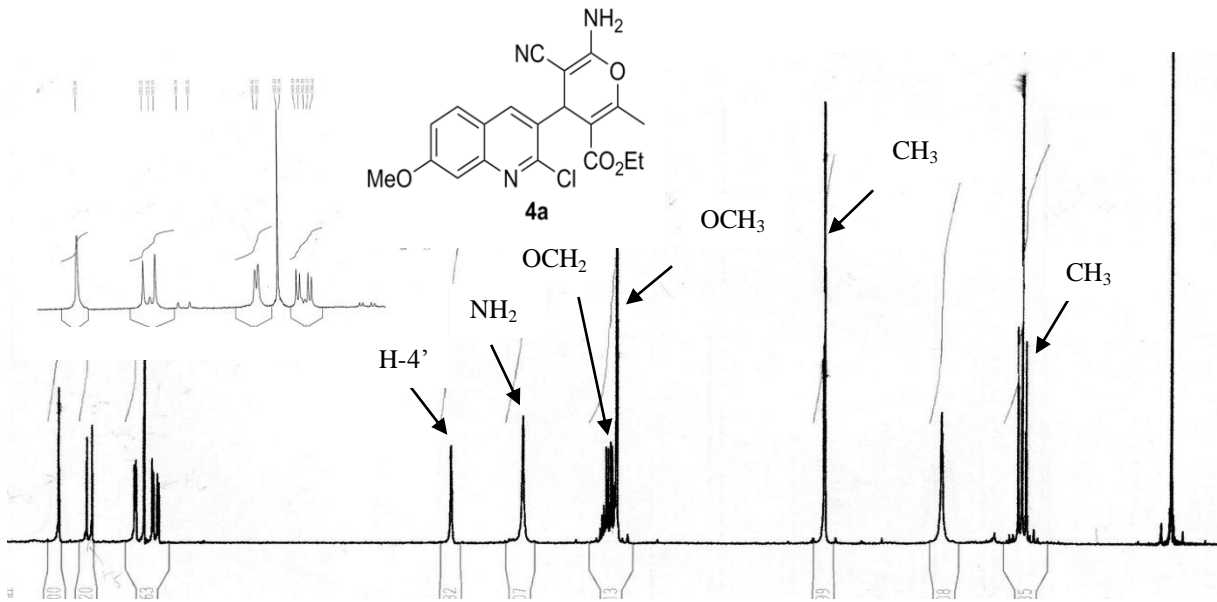
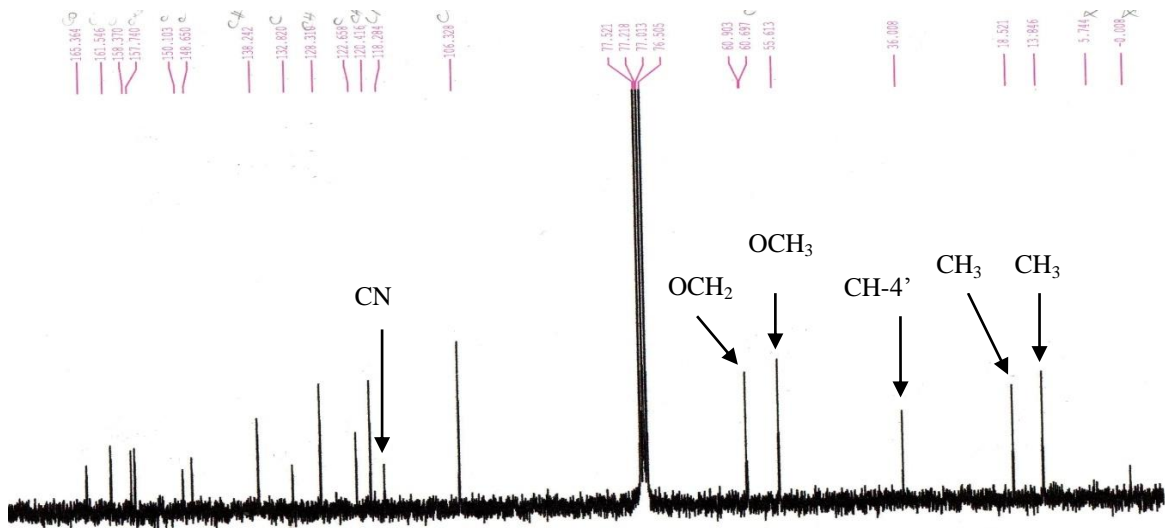


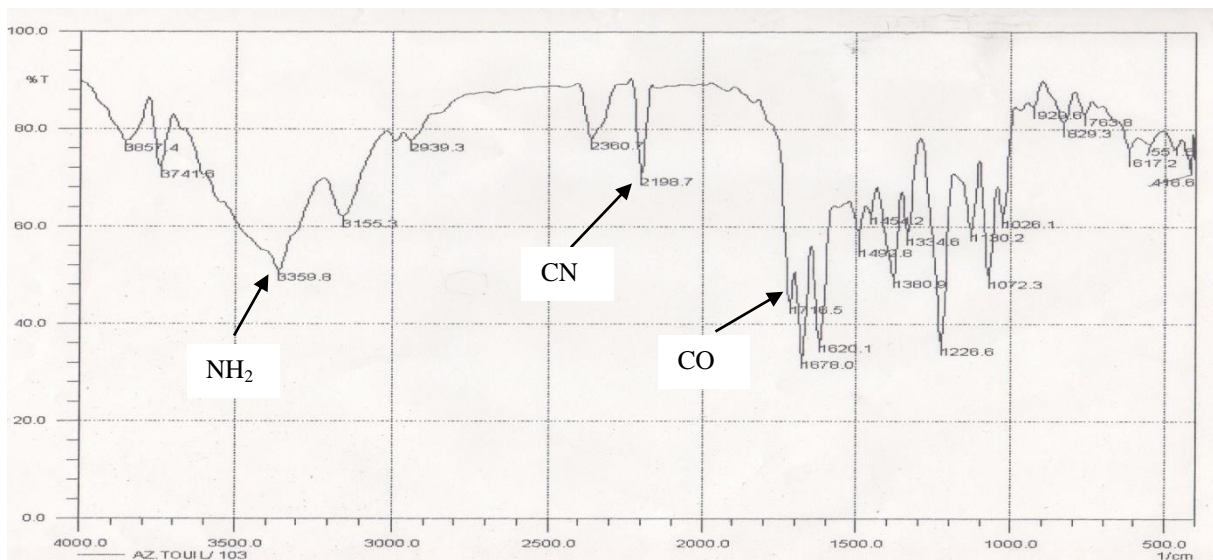
# **«Annexes»**



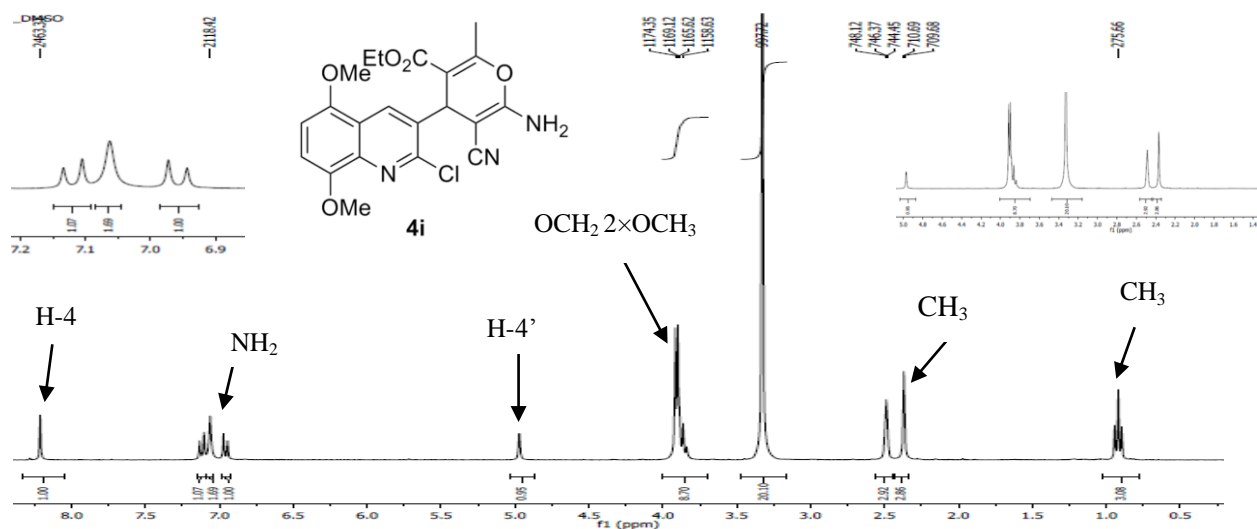
Spectre RMN <sup>1</sup>H (250 MHz, CDCl<sub>3</sub>) du composé **4a**



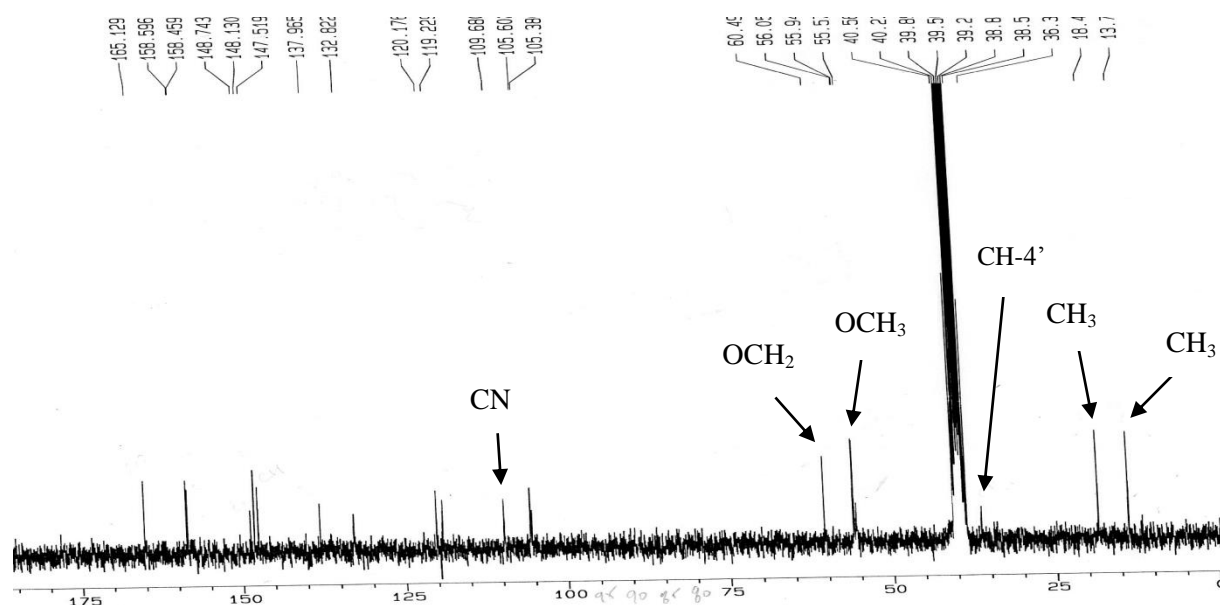
Spectre RMN <sup>13</sup>C (62.9 MHz, CDCl<sub>3</sub>) du composé **4a**



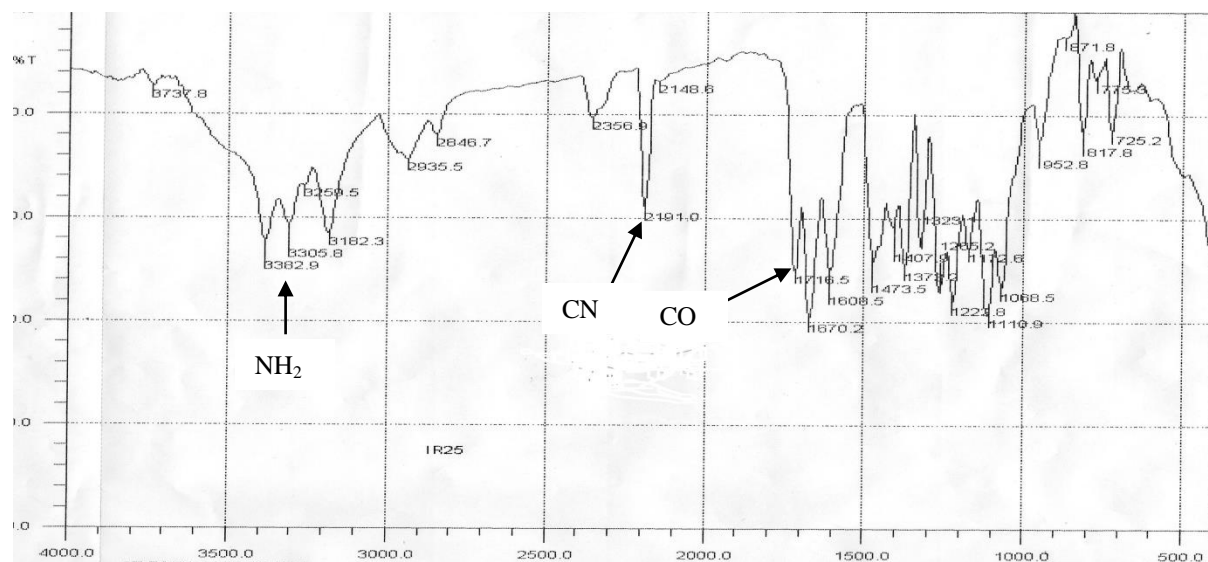
Spectre IR  $\nu_{\max}$  (KBr) (cm<sup>-1</sup>) du composé **4a**



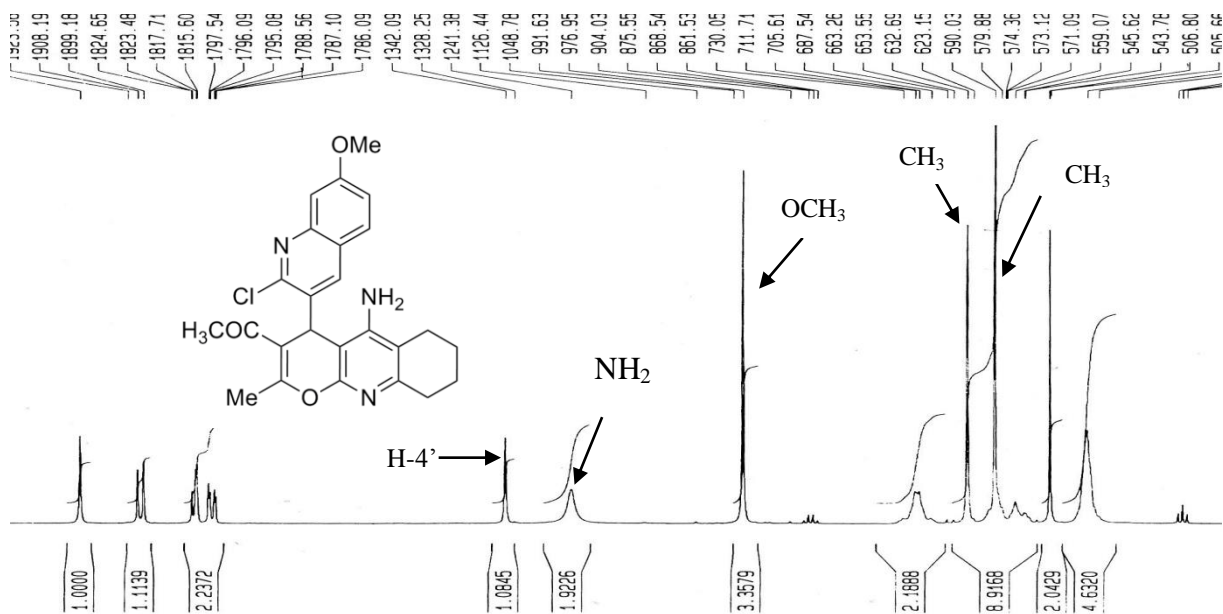
Spectre RMN <sup>1</sup>H (300 MHz, DMSO-*d*<sub>6</sub>) du composé **4i**



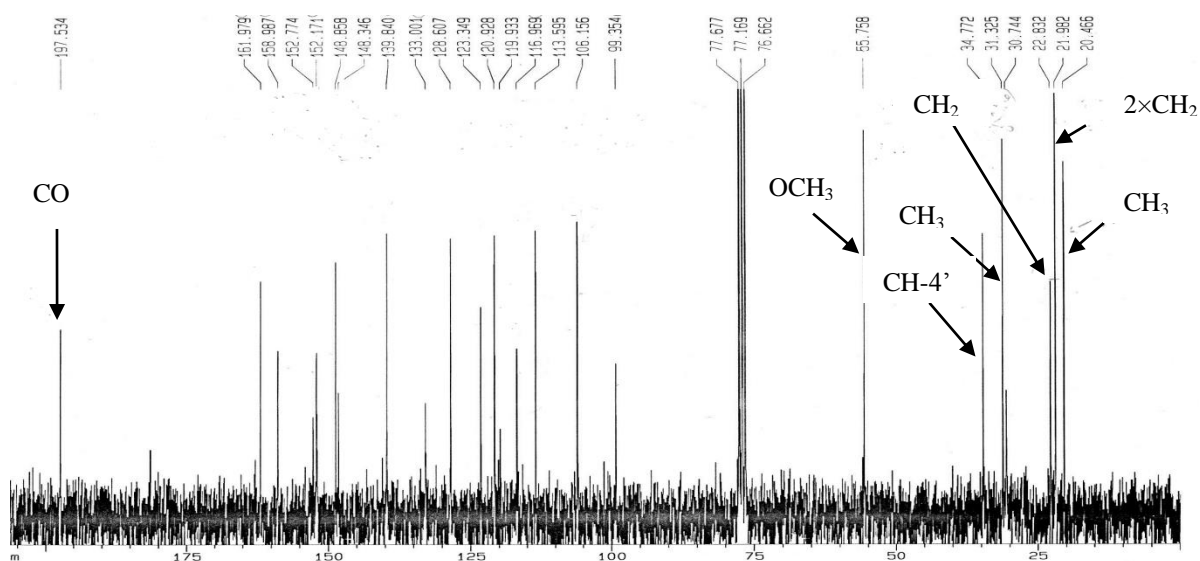
Spectre RMN <sup>13</sup>C (62.9 MHz, DMSO-*d*<sub>6</sub>) du composé **4i**



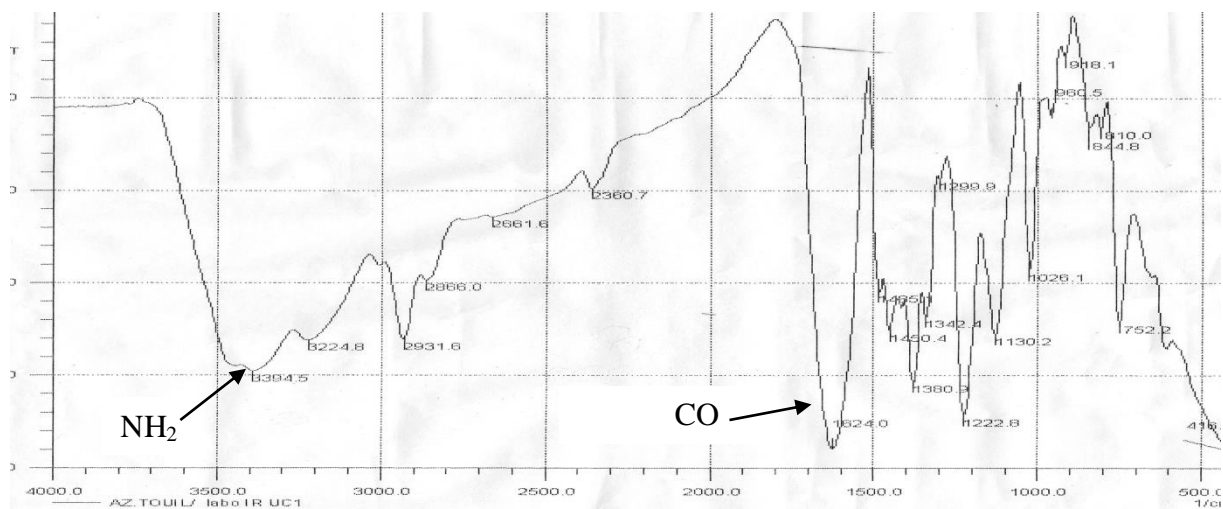
Spectre IR (ν<sub>max</sub> (KBr) (cm<sup>-1</sup>)) du composé **4i**



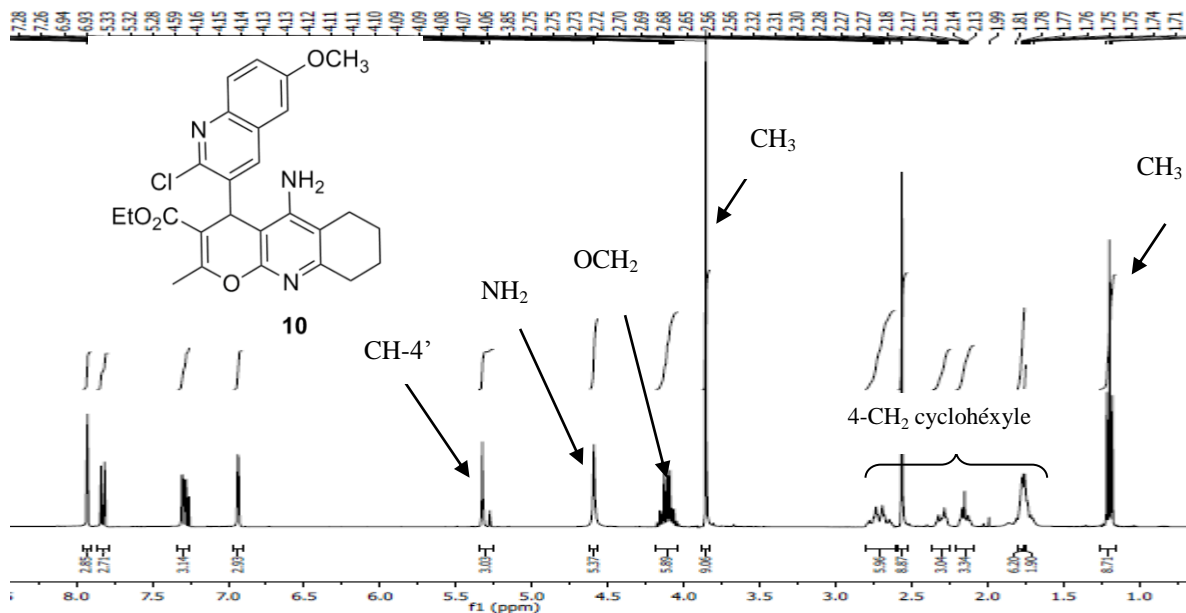
Spectre RMN <sup>1</sup>H (250 MHz, CDCl<sub>3</sub>) du composé **6b**



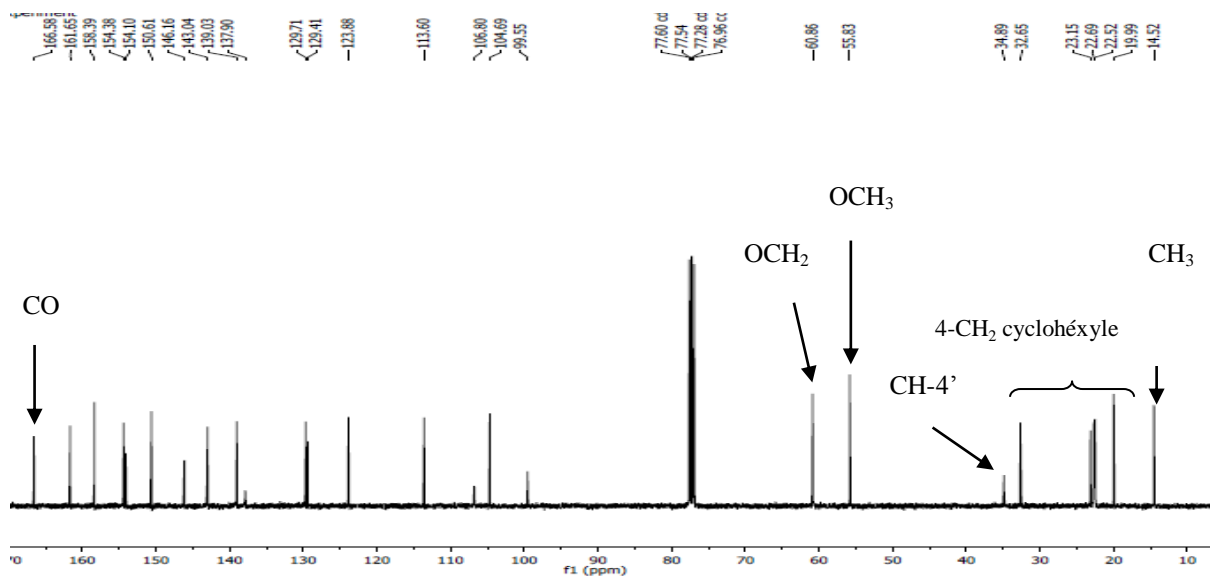
Spectre RMN <sup>13</sup>C (62.9 MHz, CDCl<sub>3</sub>) du composé **6b**



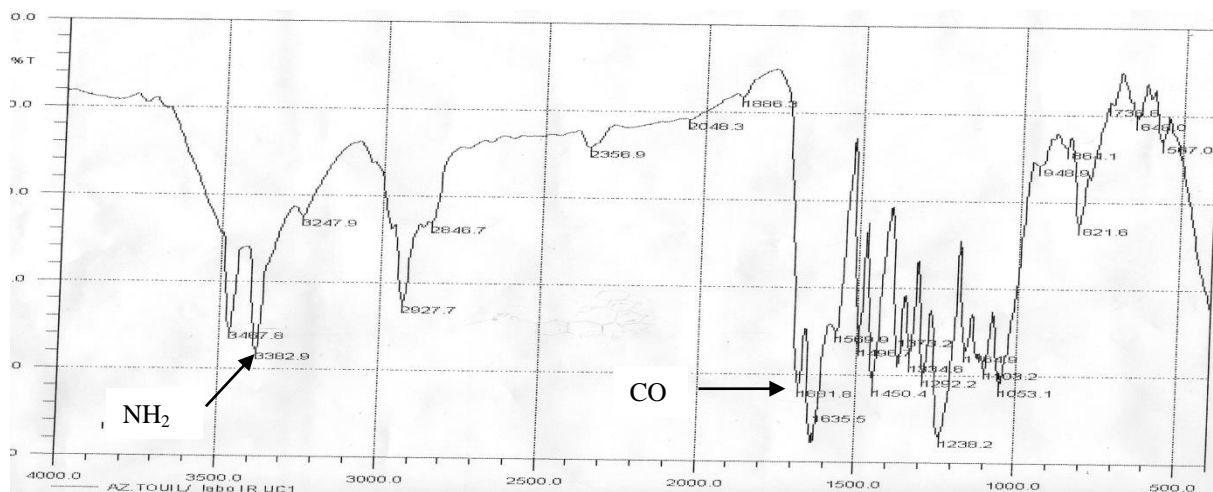
Spectre IR (ν<sub>max</sub> (KBr) (cm<sup>-1</sup>)) du composé **6b**



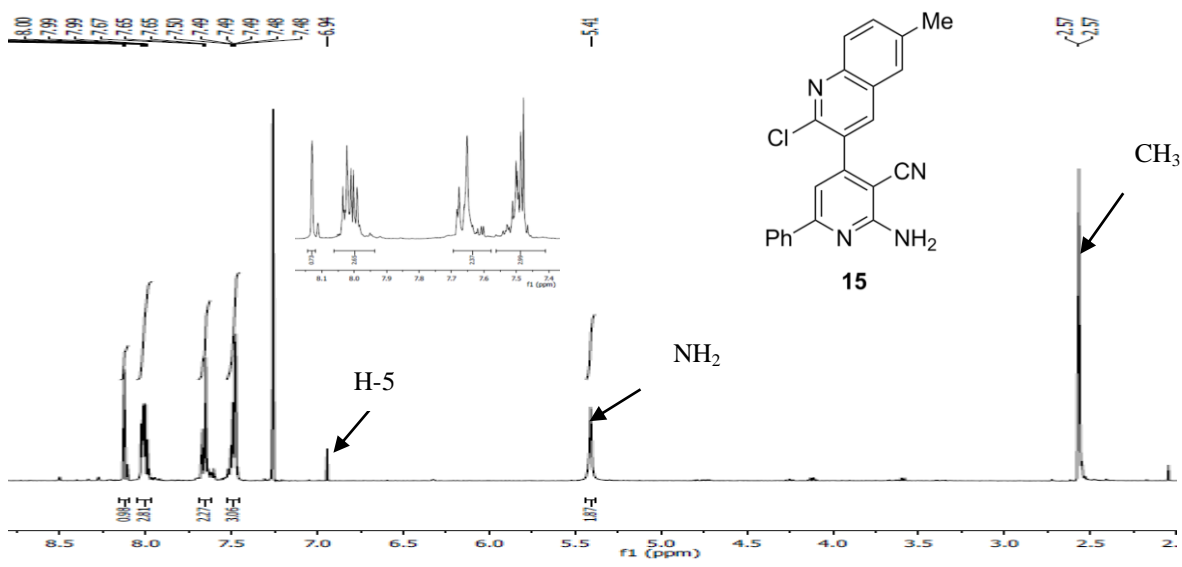
Spectre RMN <sup>1</sup>H (300 MHz, CDCl<sub>3</sub>) du composé 10



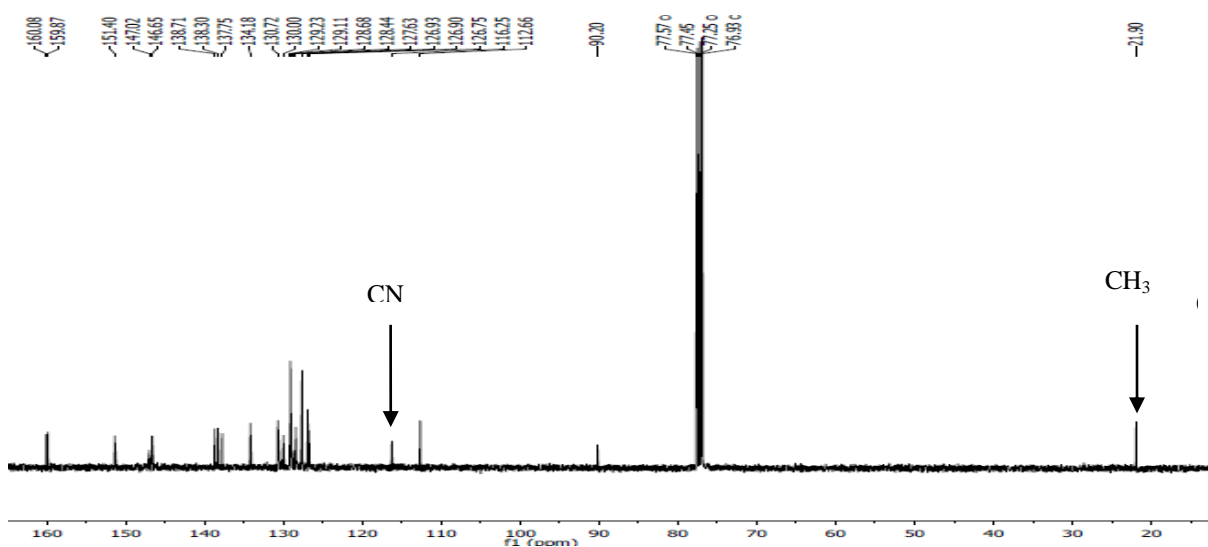
Spectre RMN <sup>13</sup>C (100 MHz, CDCl<sub>3</sub>) du composé 10



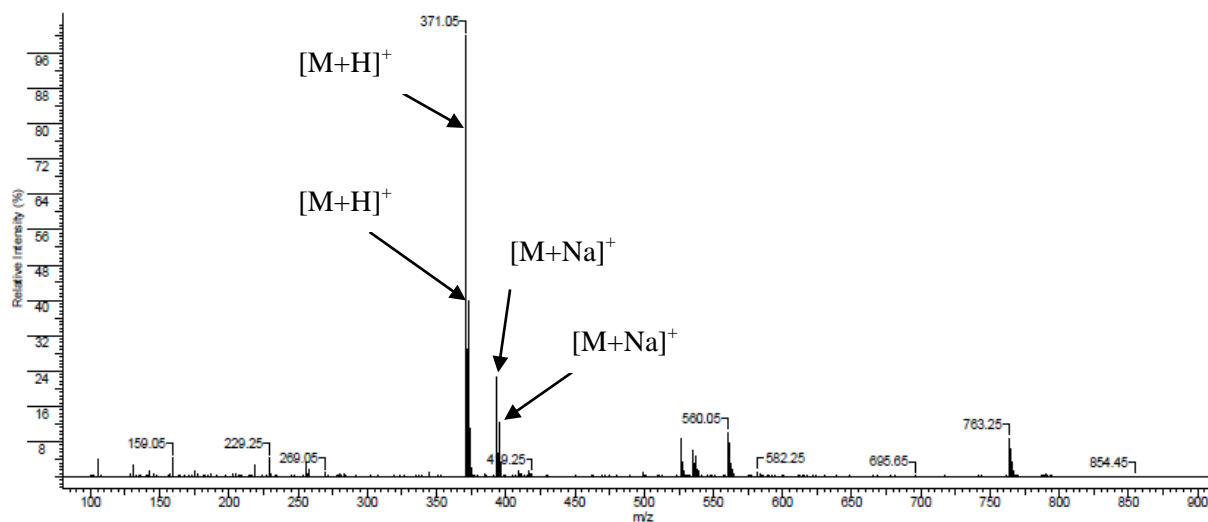
Spectre IR ( $\nu_{\max}$  (KBr) (cm<sup>-1</sup>)) du composé 10



Spectre RMN <sup>1</sup>H (300 MHz, CDCl<sub>3</sub>) du composé **15**

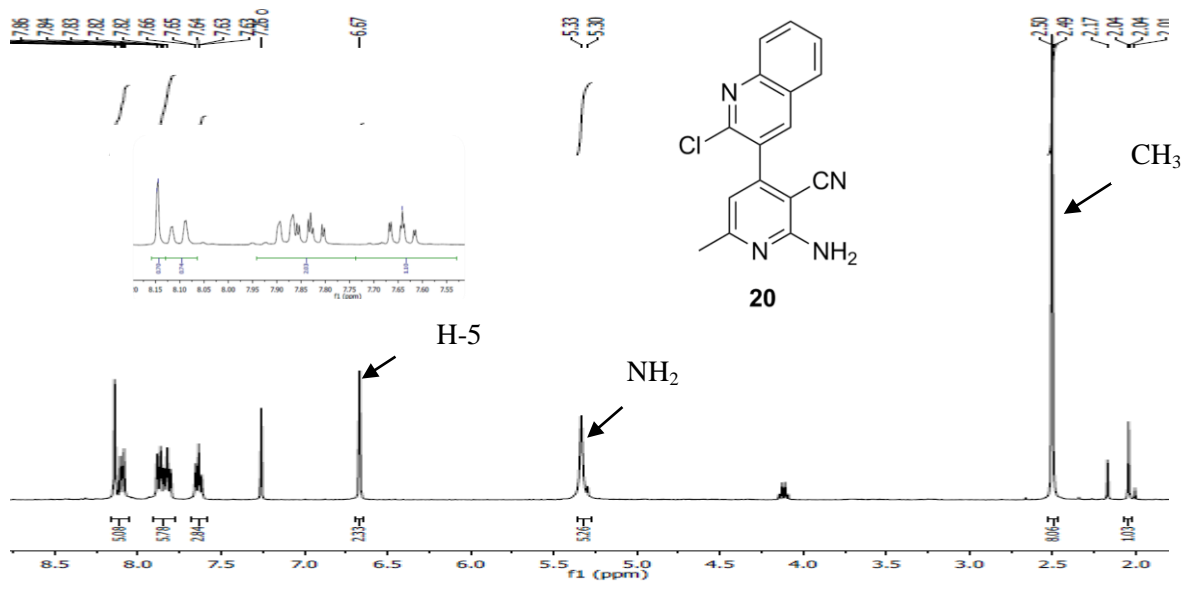


Spectre RMN <sup>13</sup>C (100 MHz, CDCl<sub>3</sub>) du composé **15**

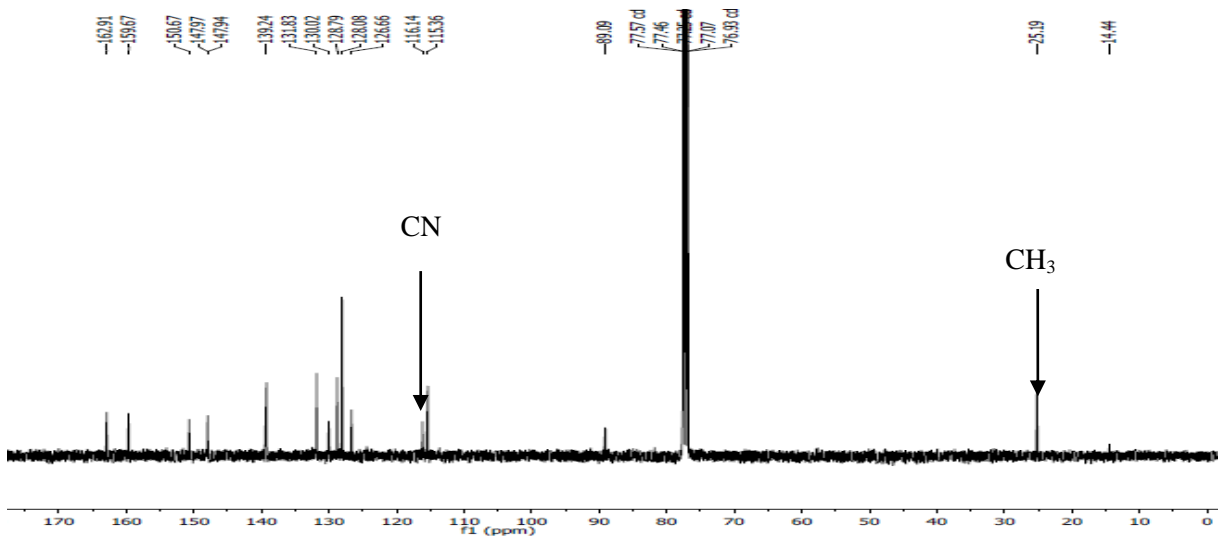


Spectres de masse du dérivé **15** en mode d'ionisation positif (electrospray) (ES/MS).

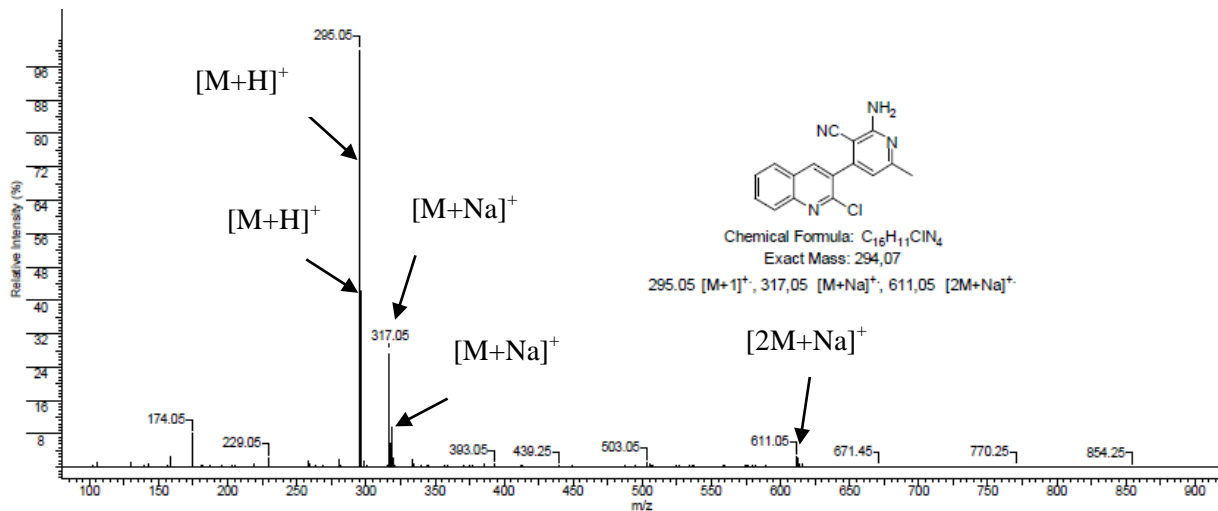




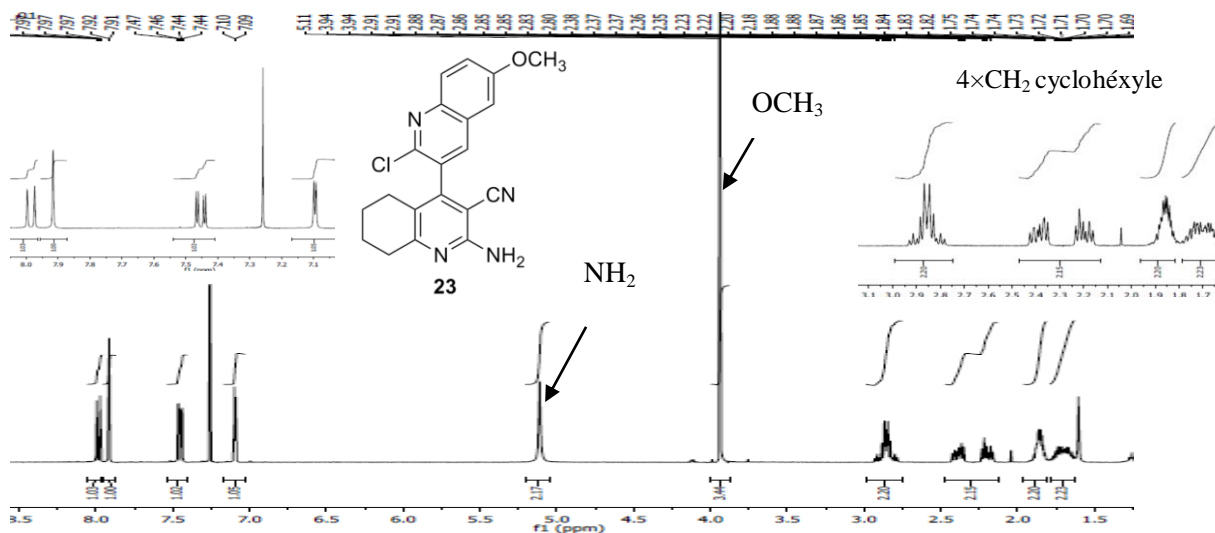
Spectre RMN  $^1\text{H}$  (300 MHz,  $\text{CDCl}_3$ ) du composé **20**



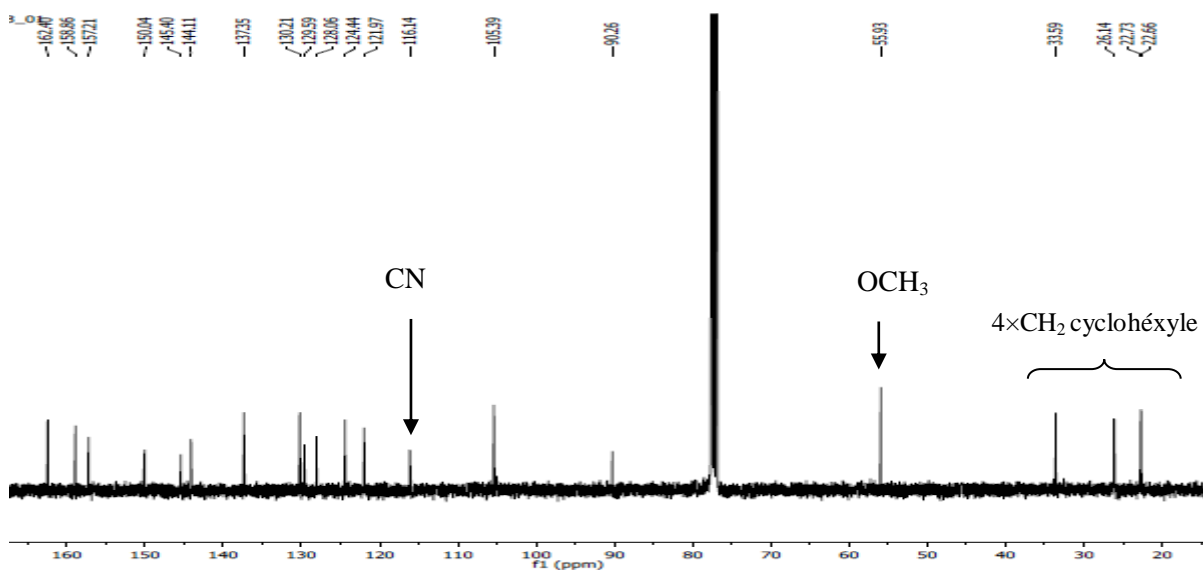
Spectre RMN  $^{13}\text{C}$  (100 MHz,  $\text{CDCl}_3$ ) du composé **20**



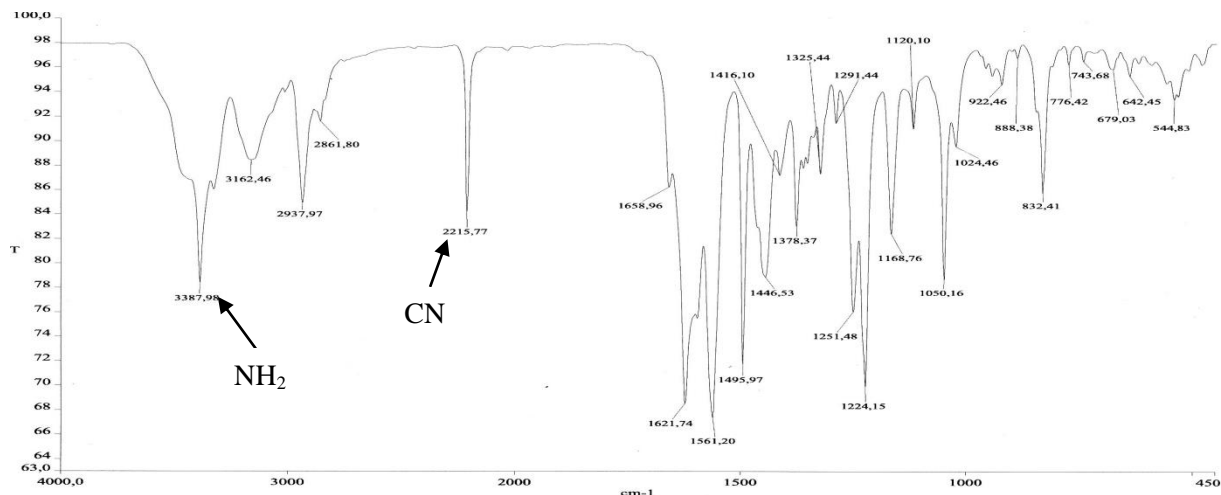
Spectres de masse du dérivé **20** en mode d'ionisation positif (electrospray) (ES/MS)



Spectre RMN <sup>1</sup>H (300 MHz, CDCl<sub>3</sub>) du composé **23**

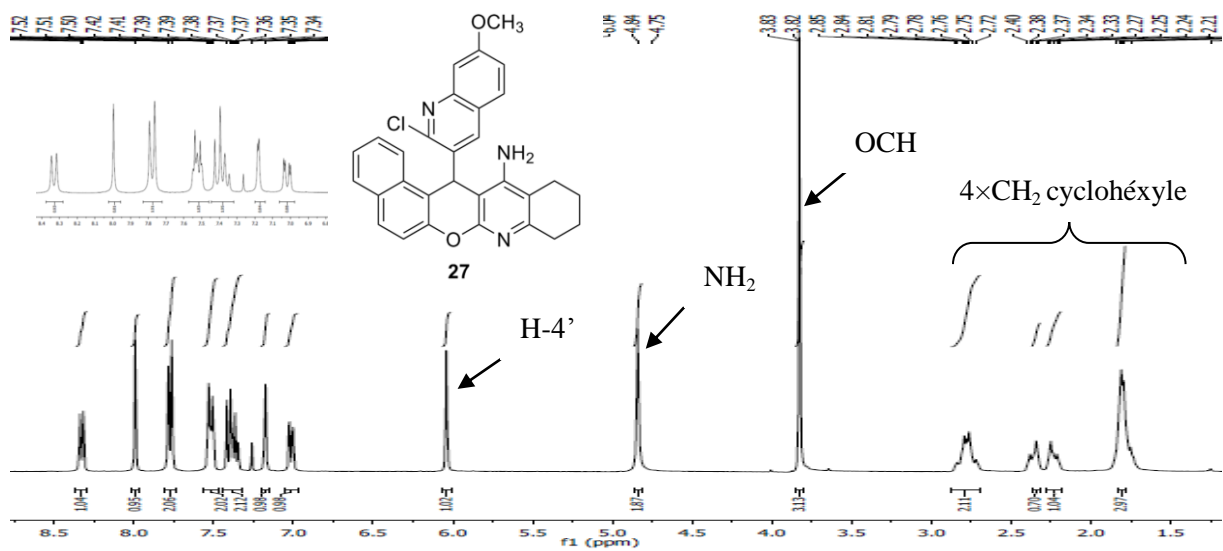


Spectre RMN <sup>13</sup>C (75.4 MHz, CDCl<sub>3</sub>) du composé **23**

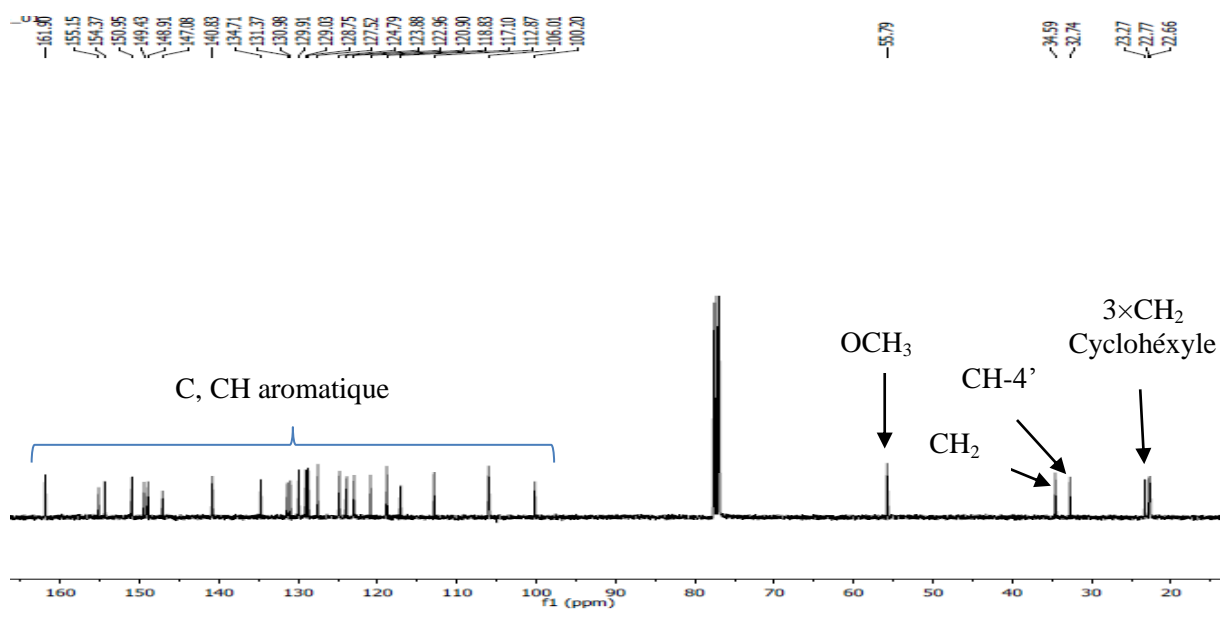


Spectre IR (v<sub>max</sub> (KBr) (cm<sup>-1</sup>)) du composé **23**

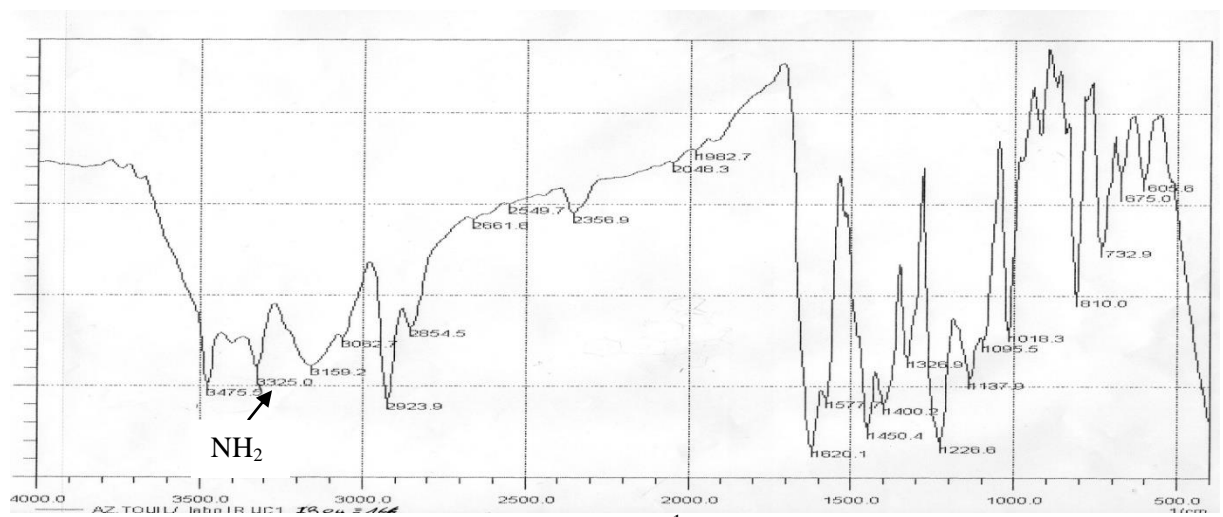




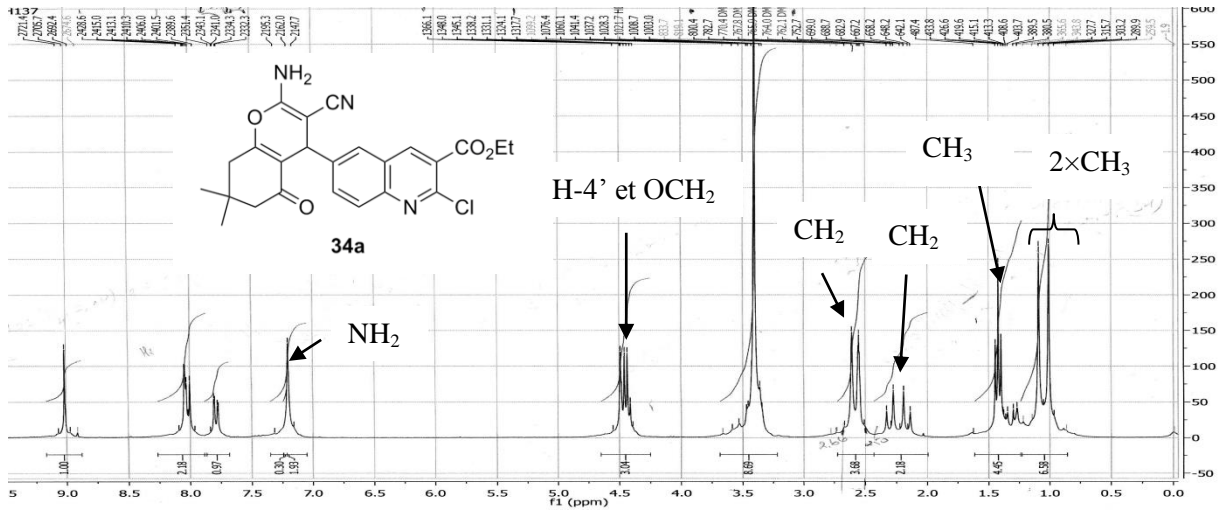
Spectre RMN <sup>1</sup>H (300 MHz, CDCl<sub>3</sub>) du composé 27



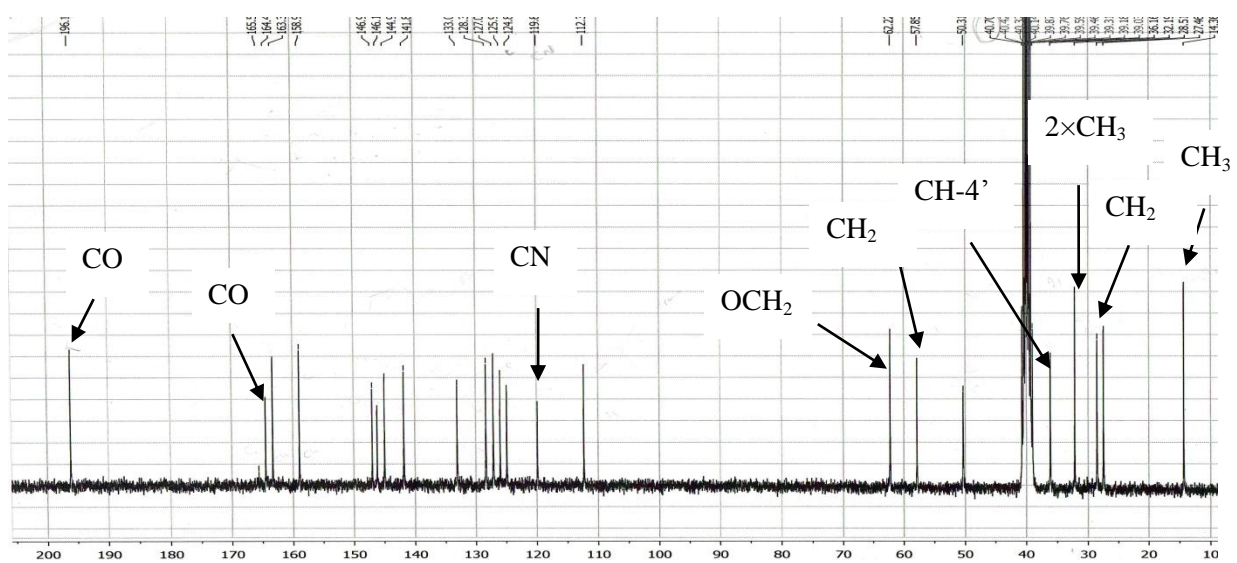
Spectre RMN <sup>13</sup>C (100 MHz, CDCl<sub>3</sub>) du composé 27



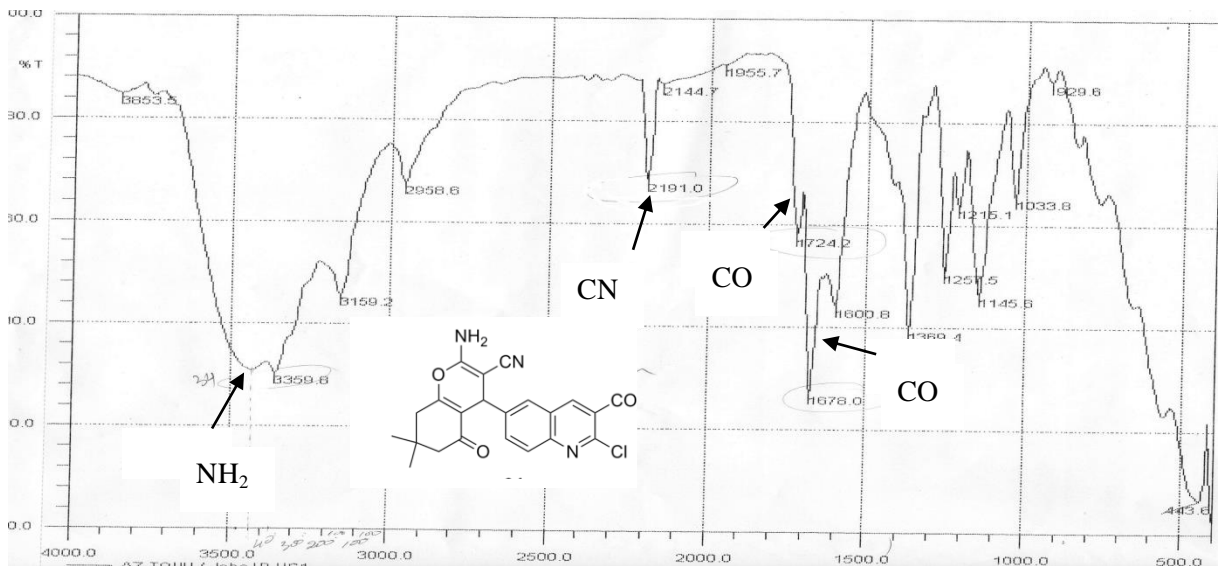
Spectre IR ν<sub>max</sub> (KBr) (cm<sup>-1</sup>) du composé 27



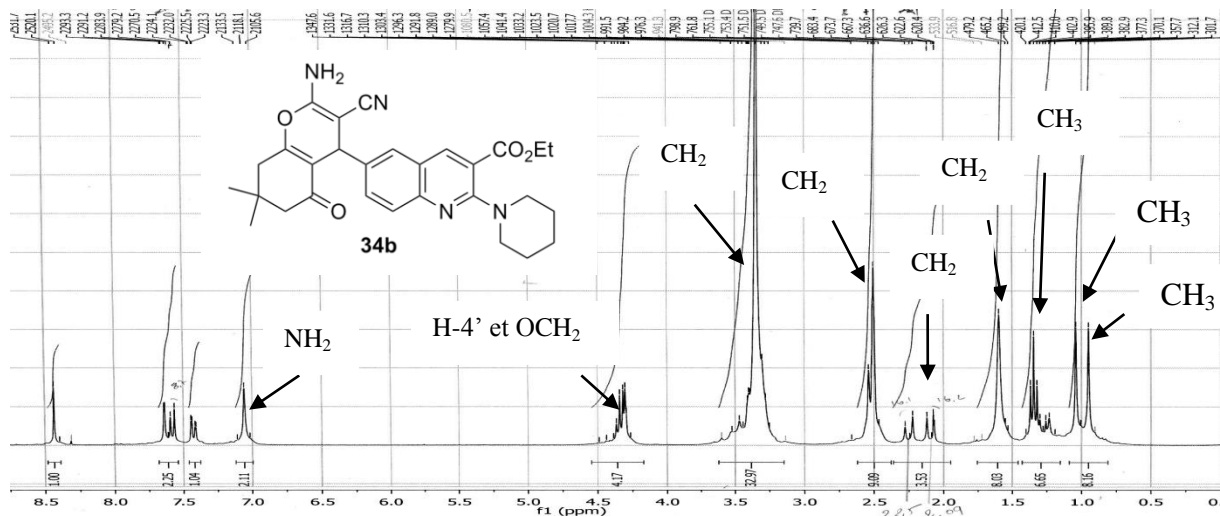
Spectre RMN <sup>1</sup>H (300 MHz, DMSO-d<sub>6</sub>) du composé **34a**



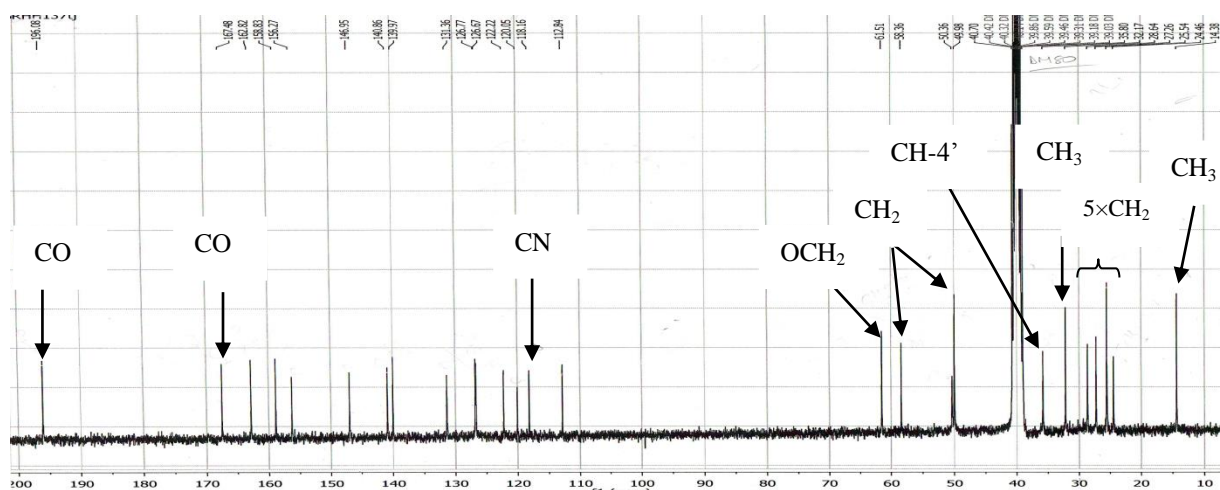
Spectre RMN <sup>13</sup>C (75.4 MHz, DMSO-d<sub>6</sub>) du composé **34a**



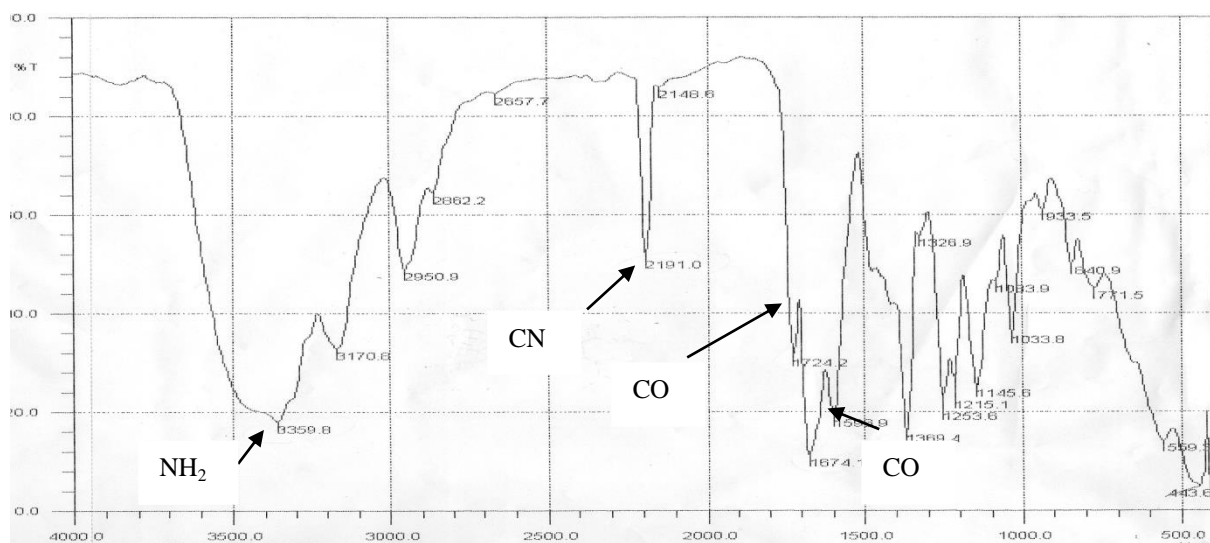
Spectre IR (ν<sub>max</sub> (KBr) (cm<sup>-1</sup>)) du composé **34a**



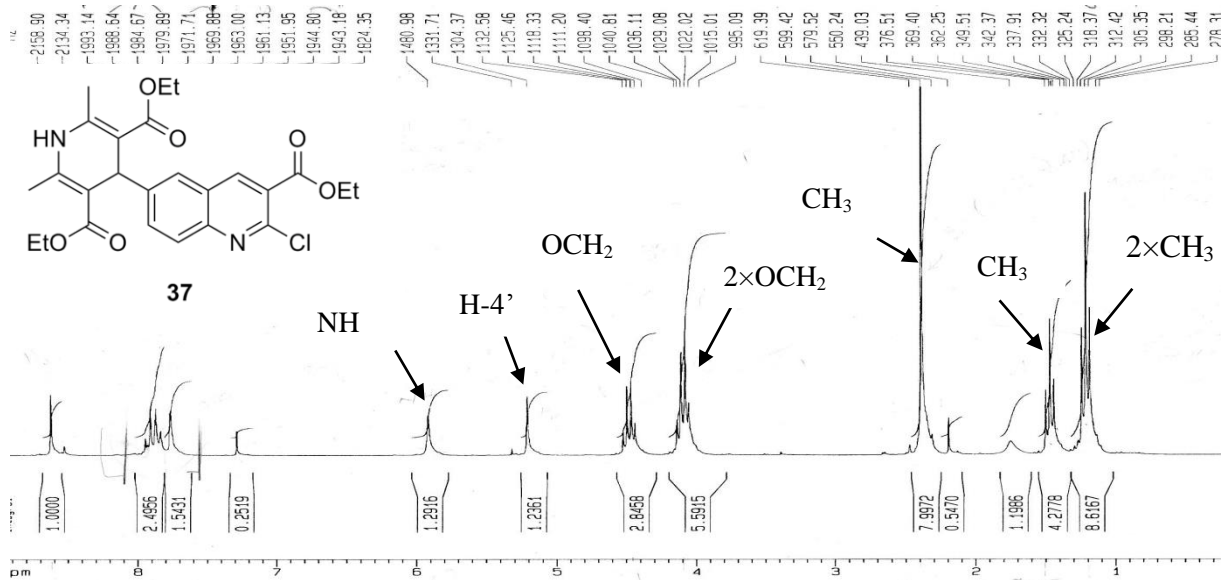
Spectre RMN <sup>1</sup>H (300 MHz, DMSO-d<sub>6</sub>) du composé **34b**



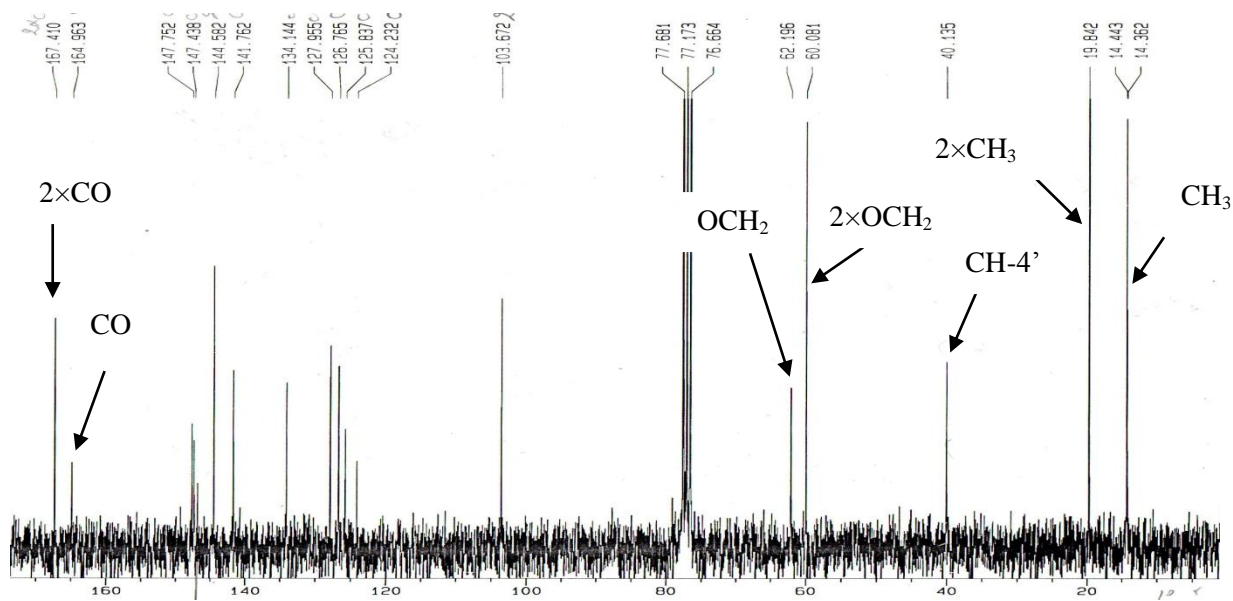
Spectre RMN <sup>13</sup>C (75.4 MHz, DMSO-d<sub>6</sub>) du composé **34b**



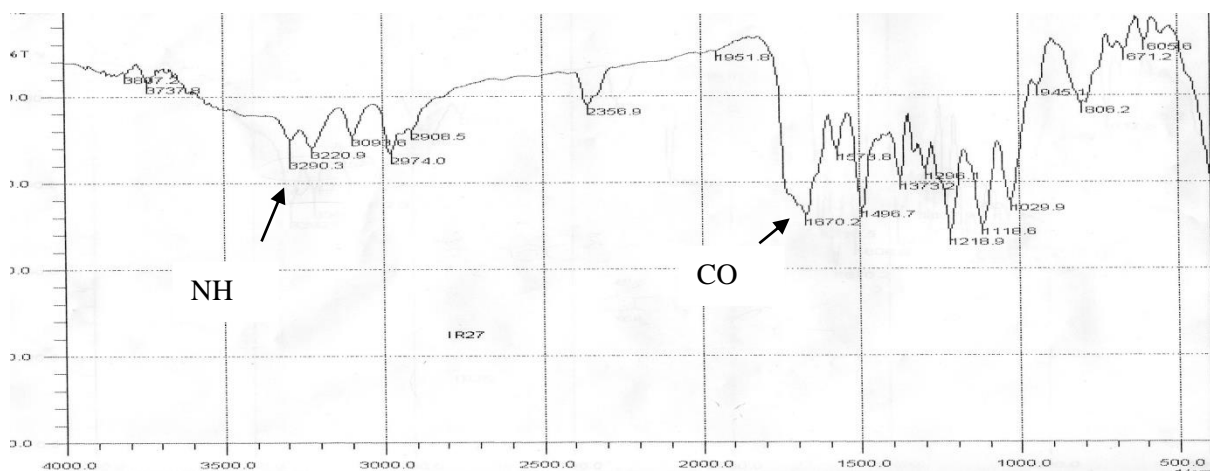
Spectre IR (ν<sub>max</sub> (KBr) (cm<sup>-1</sup>)) du composé **34b**



Spectre RMN  $^1\text{H}$  (250 MHz,  $\text{CDCl}_3$ ) du composé **37**



Spectre RMN  $^{13}\text{C}$  (62.9 MHz,  $\text{CDCl}_3$ ) du composé **37**



Spectre IR ( $\nu_{\text{max}}$  (KBr) ( $\text{cm}^{-1}$ )) du composé **37**